



**FALKEID
SHIPPING**

UNWAVERING COMMITMENT, PROFESSIONALISM, RELIABILITY AND EFFICIENCY

FALKEID - NAVIGATION EXCELLENCE, DELIVERING TRUST



FALKFJORD

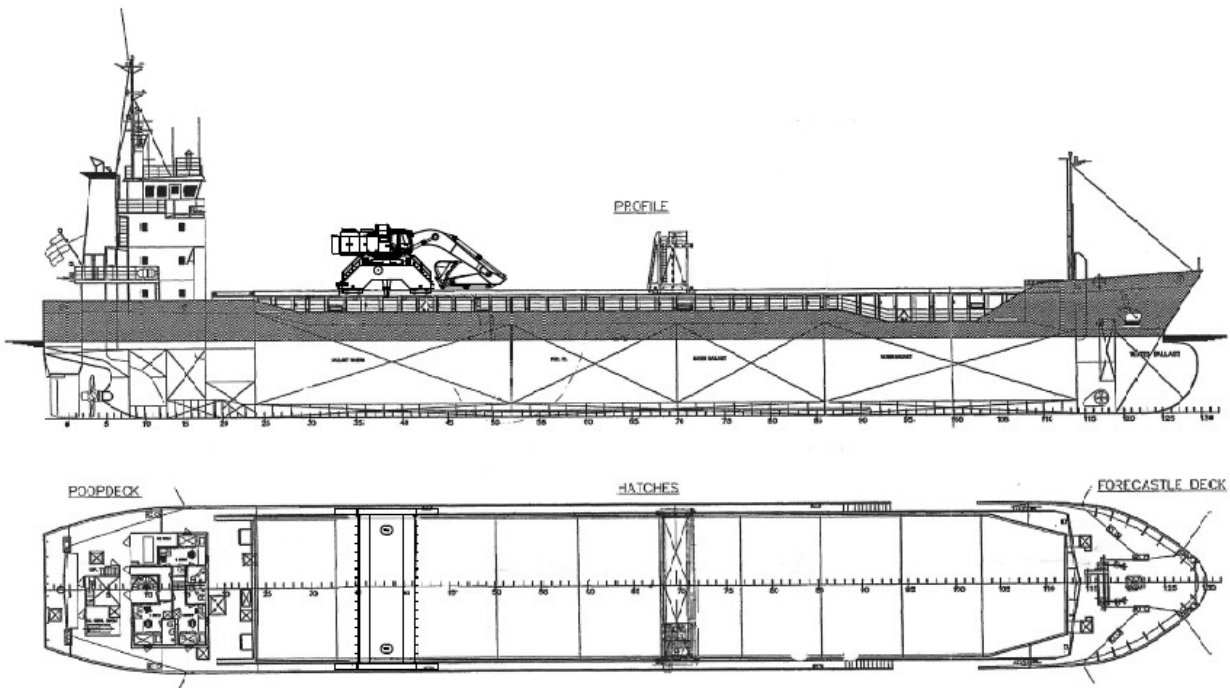
NAME OF SHIP	MV FALKFJORD
CALL SIGNAL	LANB5
PORT OF REG.FLAG	STAVANGER
TYPE OF VESSEL	DRY CARGO SHIP
BUILT	NETHERLANDS, 1998
OWNER	FALKEID SHIPPING AS NO-4160 FINNØY
OFFICIAL NUMBER	9141364
IMO NUMBER	9141364
CLASS & NUMBER	DNV-GL100A5E1 GENERAL DRY-CARGO VESSEL DBC DG STRENGTHENED (IB) MC E1 AUT
LENGTH OVERALL	89.68 m
LENGTH B.P.	84.99 m
BEAM EXTREME	13.17 m
DRAUGHT SUMMER	6.22 m
MOULDED DEPTH	7.15 m
DEADWEIGHT	4618 mt
LIGHT SHIP	1391.17 mt
GROSS TONNAGE	2834 mt
MAIN ENGINE	DEUTZ TBD 645 L 2200kW 600 rpm
PROPELLER	CONTROLLABLE PITCH PROPELLER
BOW THRUSTER	260 Kw / 348 hp
RUDDER TYPE	BECKER

TOTAL BALLAST	1627 m ³
TOTAL FRESH WATER	41 m ³
TOTAL MAR. DIESEL OIL	209 m ³
TOTAL LUB.OIL	15.4 m ³

HOLD/Type/Size of hatch cover BOXSHAPED-TYPE / 62.35 m + 11.00

HOLD DIMENSION / L+B+H	62.35 m + 11.00 m + 8.44 m
HOLD CAPACITY Grain / Bales	201929 ft ³ / 5718 m ³
MAX.LOAD ON DECK / H. COVER	18 t/m ² / 1.6 t/m ²
LENGTH OF ANCHOR CHAIN	PORT/STBD 8 SHACKLES + 27.1 m each

Contact details:
 Mobile: +47 483 85 776
 Email: falkford@falkeid.no



All details are without guarantee